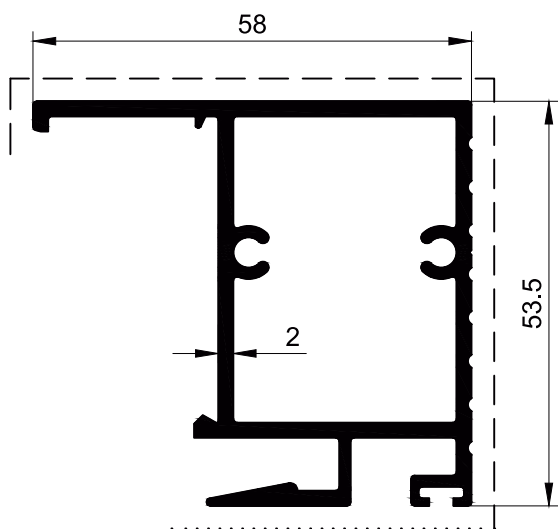
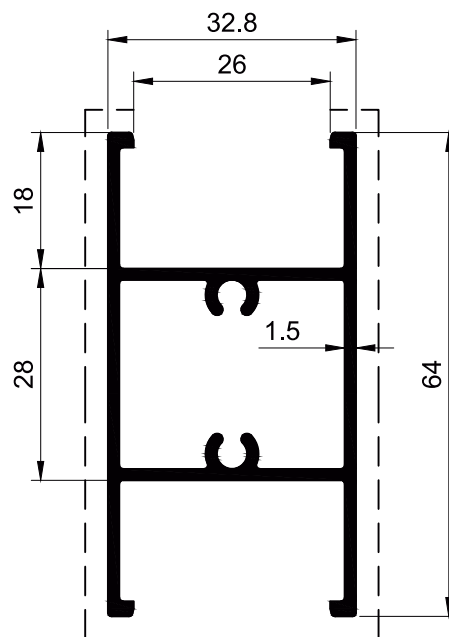


100mm Sliding Door (Double Glazing)

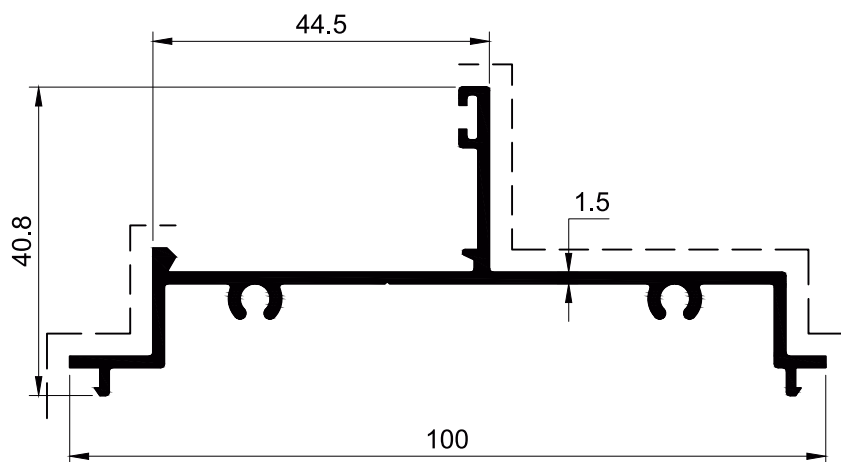
Group 03
Page 22



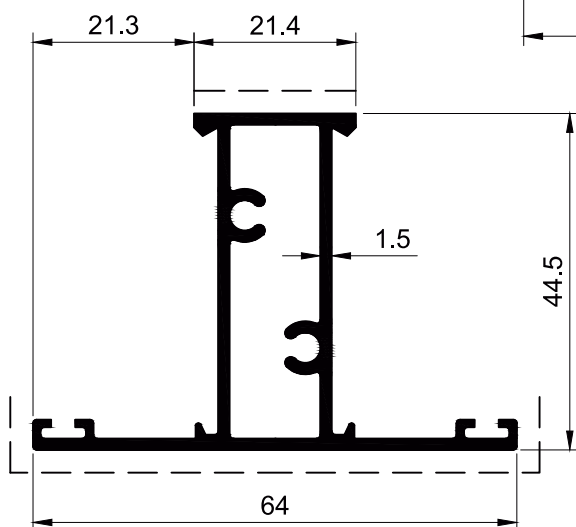
SECTION NO. - SDG-2603
EST. WEIGHT - 1.250 KG./M.



SECTION NO. - SDG-2801
EST. WEIGHT - 0.883 KG./M.



SECTION NO. - 100SFL-101
EST. WEIGHT - 0.753 KG./M.

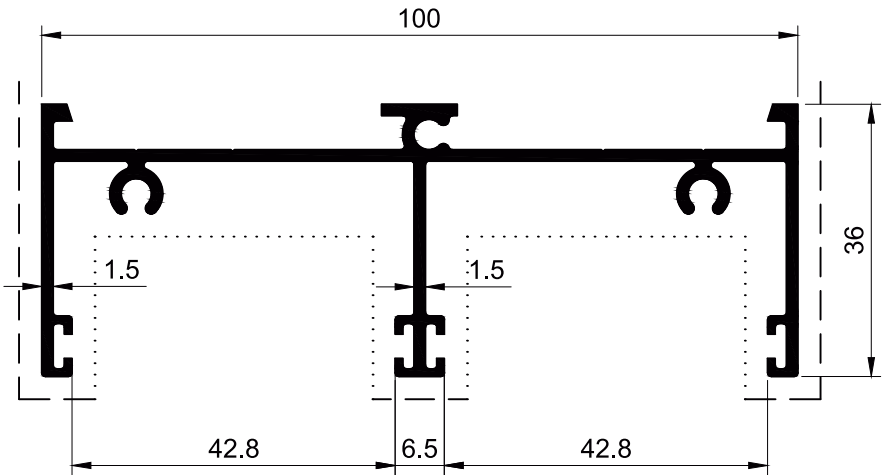


SECTION NO. - CA-1117
EST. WEIGHT - 0.840 KG./M.

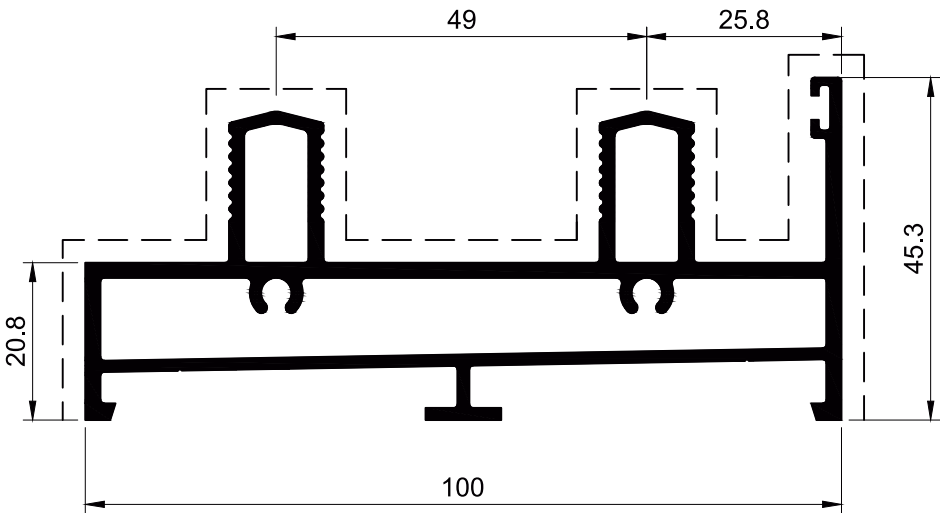
----- : Significant Surface
..... : Insignificant Surface

100mm Sliding Door (Double Glazing)

Group 03
Page 23

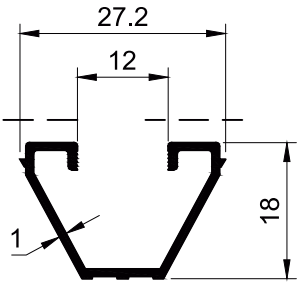


SECTION NO. - SDG-2002
EST. WEIGHT - 1.109 KG./M.

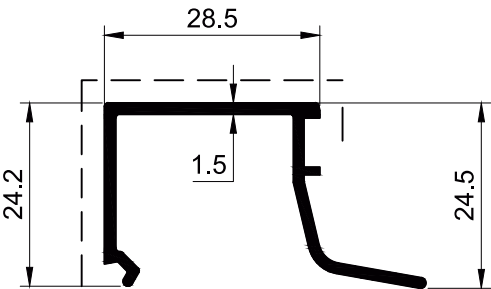


SECTION NO. - SDG-2102
EST. WEIGHT - 1.893 KG./M.

Single Glazing



SECTION NO. - SDG-2902
EST. WEIGHT - 0.183 KG./M.

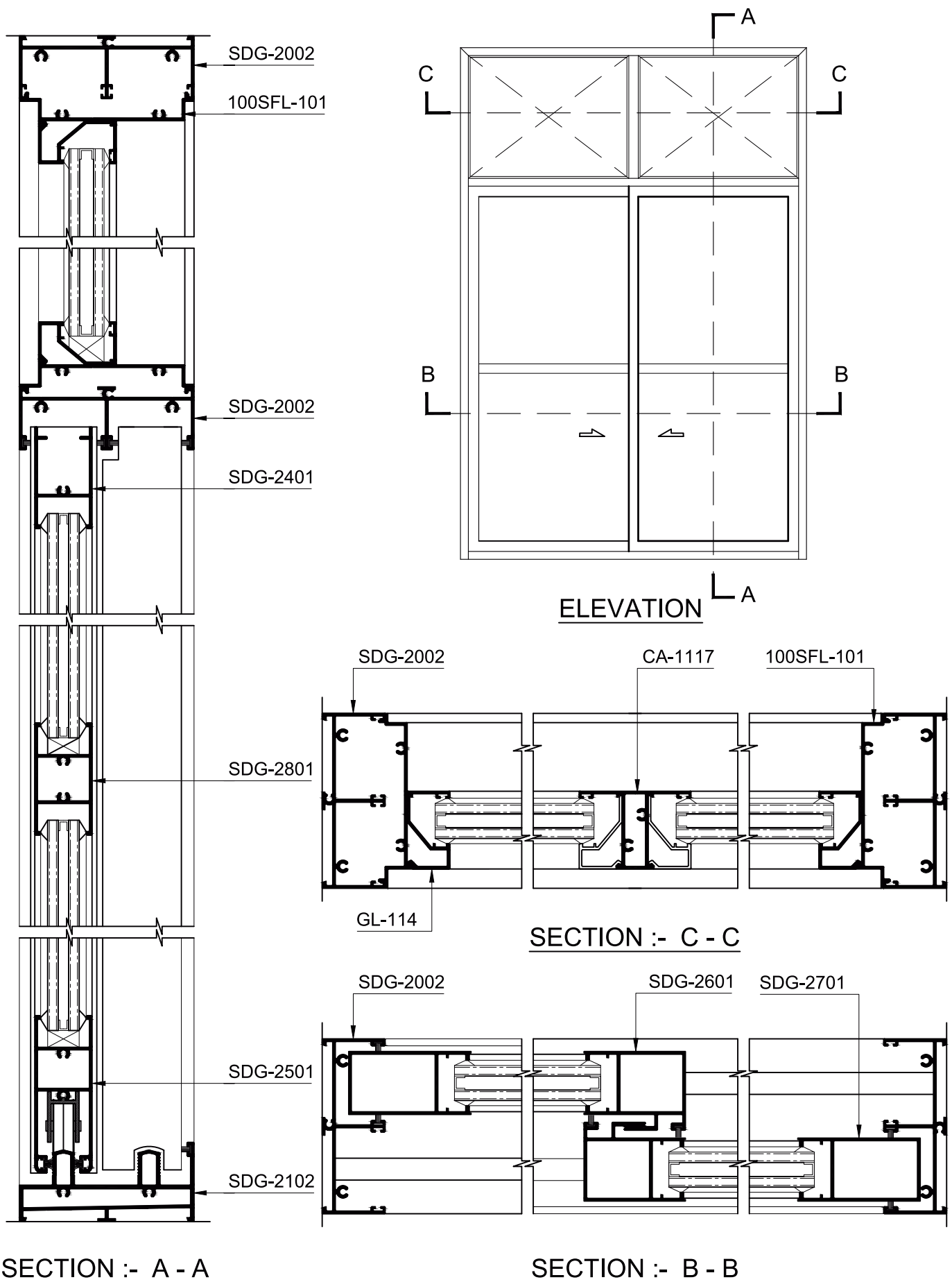


SECTION NO. - GL-113
EST. WEIGHT - 0.350 KG./M.

----- : Significant Surface
..... : Insignificant Surface

100mm Sliding Door (Double Glazing)

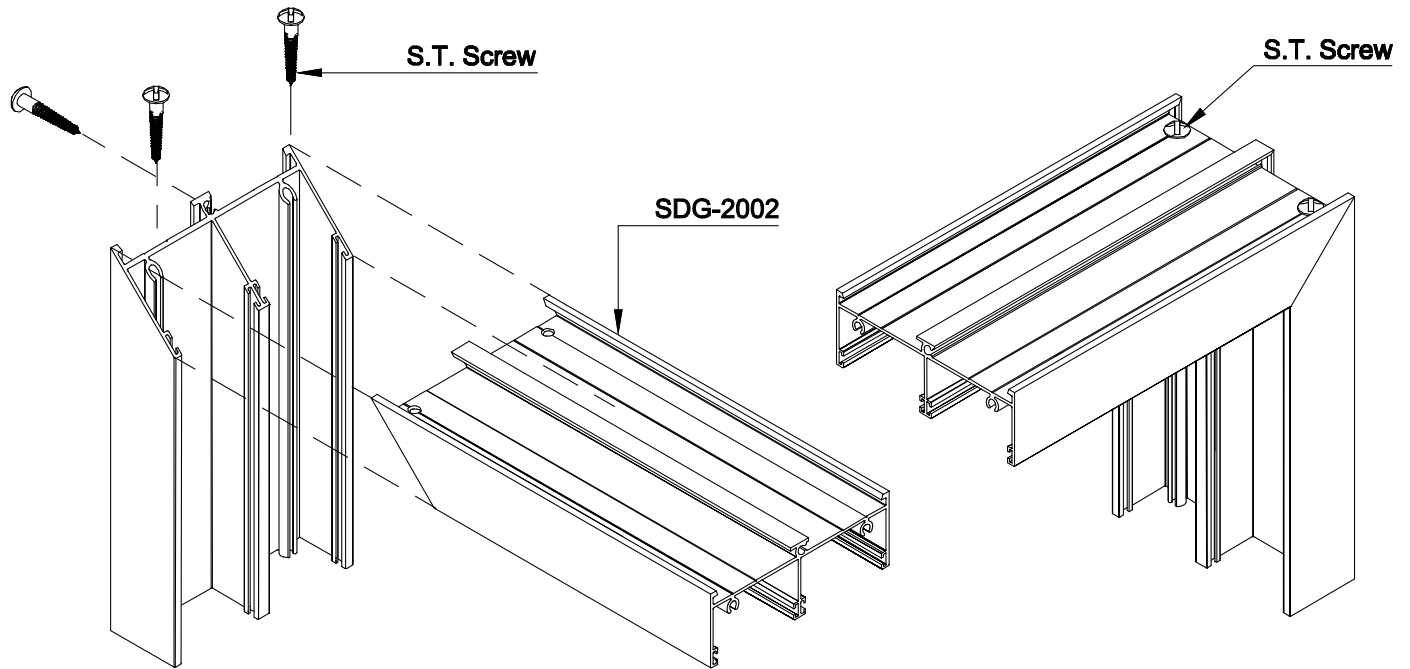
Group 03
Page 24



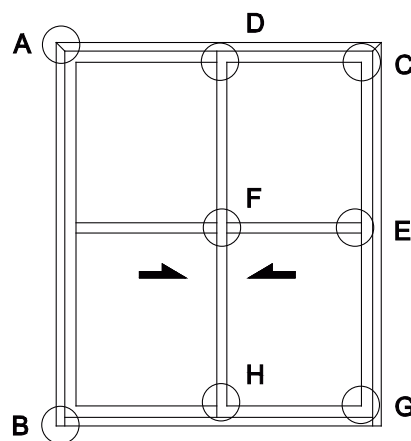
PERFORMANCE TESTS WERE CONDUCTED IN A UKAS ACCREDITED LAB

3D Assembly Detail Of 100mm Sliding Door (Double Glazing)

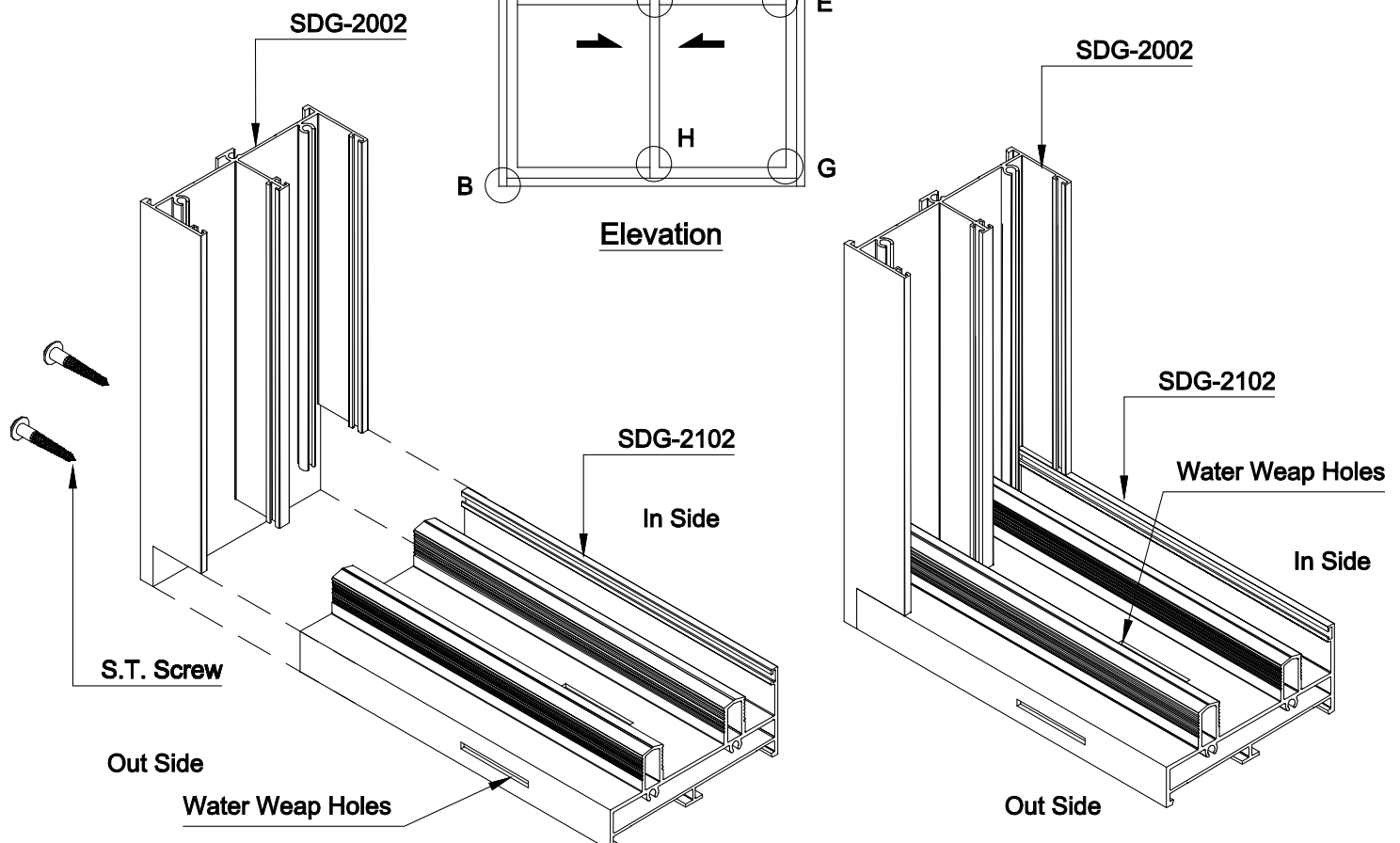
Group 03
Page 25



Detail - "A" Head & Jamb 45° Joint



Elevation



Detail - "B" Sill & Jamb 90° Joint

3D Assembly Detail Of 100mm Sliding Door (Double Glazing)

Group 03
Page 26

